



# INDOFINE Chemical Company, Inc.

121 Stryker Lane, Bldg. 30, Suite 1 • Hillsborough, NJ 08844 • U.S.A.

Phone: (908) 359-6778 • FAX: (908) 359-1179

website: [www.indofinechemical.com](http://www.indofinechemical.com)

e-mail: [chemical@indofinechemical.com](mailto:chemical@indofinechemical.com)

## CERTIFICATE OF ANALYSIS

Catalog Number: 06-1389

Product Name: **4-HYDROXY-4'-METHOXYTOLAN**  
(4-((4'-Methoxyphenyl)ethynyl)phenol)

CAS Number: [18938-18-6]

Lot Number: 1612747

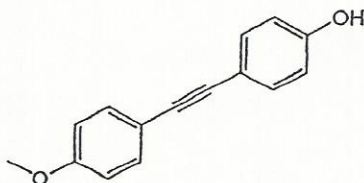
Chemical Formula: C<sub>15</sub>H<sub>12</sub>O<sub>2</sub>

Molecular Weight: 224.25

Appearance: Beige powder

Storage: Store in a cool, dry place

Assay: 98.14%





# INDOFINE Chemical Company, Inc.

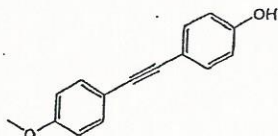
121 Stryker Lane, Bldg. 30, Suite 1 • Hillsborough, NJ 08844 • U.S.A.

Phone: (908) 359-6778 • FAX: (908) 359-1179

website: [www.indofinechemical.com](http://www.indofinechemical.com)

e-mail: [chemical@indofinechemical.com](mailto:chemical@indofinechemical.com)

## HPLC ANALYSIS

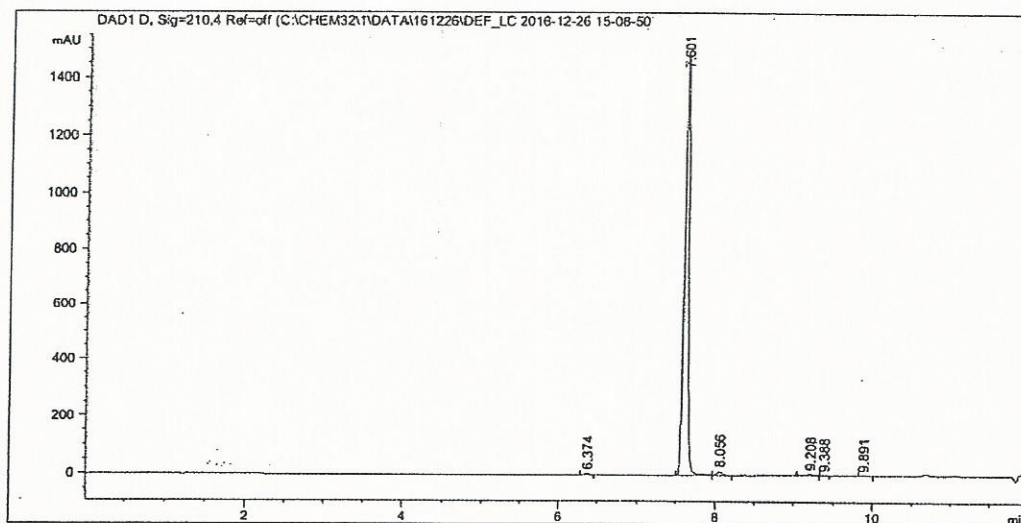


Catalog No.: 06-1389  
Product Name: 4-Hydroxy-4'-methoxytolan  
Lot No.: 1612747

```

=====
Acq. Instrument : 1260                      Seq. Line : 4
Injection Date  : 12/26/2016 3:56:11 PM    Location  : 17
                                           Inj       : 1
                                           Inj Volume: 1.000 µl
Different Inj Volume from Sample Entry! Actual Inj Volume : 0.200 µl
Acq. Method    : C:\Chem32\1\Data\161226\DEF_LC 2016-12-26 15-08-50\10-90-10MIN.M
Last changed   : 12/26/2016 3:08:51 PM
Analysis Method: C:\Chem32\1\Data\161226\DEF_LC 2016-12-26 15-08-50\10-90-10MIN.M (Sequence
Method)
Last changed   : 12/26/2016 4:30:27 PM
                (modified after loading)
=====

```



### Area Percent Report

```

=====
Sorted By      : Signal
Multiplier     : 1.0000
Dilution      : 1.0000
Use Multiplier & Dilution Factor with ISTDs
=====

```

Signal 1: DAD1 D, Sig=210,4 Ref=off

Peak #	RetTime [min]	Type	Width [min]	Area [mAU*s]	Height [mAU]	Area %
1	6.374	BBA	0.0552	16.13665	4.57033	0.2936
2	7.601	BV	0.0584	5392.95166	1483.46423	98.1371
3	8.056	VBA	0.0619	52.15542	13.25198	0.9491
4	9.208	BB	0.0695	28.17707	5.91983	0.5127



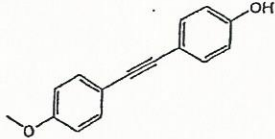
# INDOFINE Chemical Company, Inc.

121 Stryker Lane, Bldg. 30, Suite 1 • Hillsborough, NJ 08844 • U.S.A.

Phone: (908) 359-6778 • FAX: (908) 359-1179

website: [www.indofinechemical.com](http://www.indofinechemical.com)

e-mail: [chemical@indofinechemical.com](mailto:chemical@indofinechemical.com)



Catalog No.: 06-1389  
Product Name: 4-Hydroxy-4'-methoxytolan  
Lot No.: 1612747

Data File C:\CHEM32\1\DATA\161226\DEF\_LC 2016-12-26 15-08-50

Peak #	RetTime [min]	Type	Width [min]	Area [mAU*s]	Height [mAU]	Area %
5	9.388	BB	0.0588	3.37697e-1	9.20826e-2	6.145e-3
6	9.891	BB	0.0575	5.56622	1.56314	0.1013

Totals : 5495.32471 1508.86159

=====  
\*\*\* End of Report \*\*\*



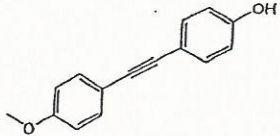
# INDOFINE Chemical Company, Inc.

121 Stryker Lane, Bldg. 30, Suite 1 • Hillsborough, NJ 08844 • U.S.A.

Phone: (908) 359-6778 • FAX: (908) 359-1179

website: [www.indofinechemical.com](http://www.indofinechemical.com)

e-mail: [chemical@indofinechemical.com](mailto:chemical@indofinechemical.com)



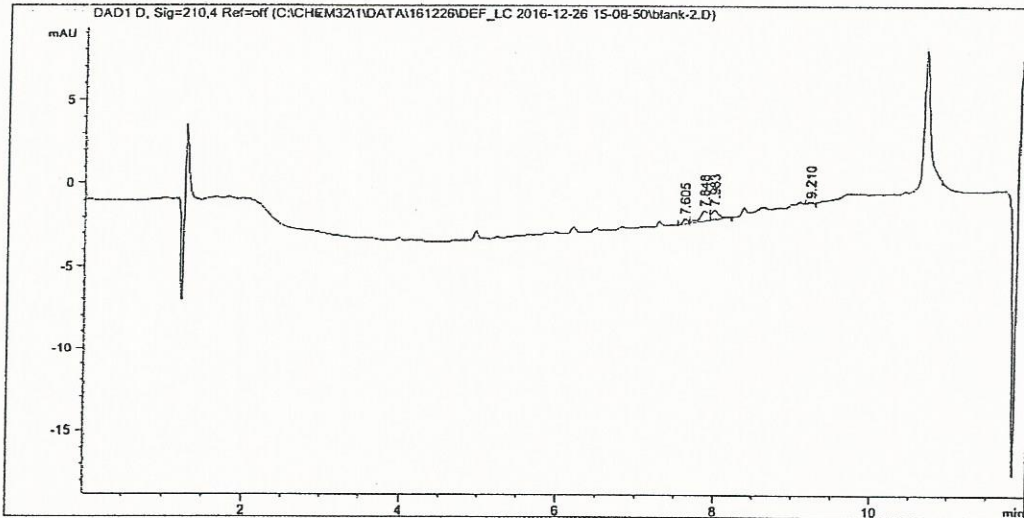
Catalog No.: 06-1389  
Product Name: 4-Hydroxy-4'-methoxytolan  
Lot No.: 1612747

Data File C:\CHEM32\1\DATA\161226\DEF\_LC 2016-12-26 15-08-50\blank-2.D  
Sample Name: blank

```

=====
Acq. Instrument : 1260                      Seq. Line : 3
Injection Date  : 12/26/2016 3:40:49 PM    Location  : 1
                                           Inj      : 1
                                           Inj Volume: 1.000 µl
Acq. Method    : C:\Chem32\1\Data\161226\DEF_LC 2016-12-26 15-08-50\10-90-10MIN.M
Last changed   : 12/26/2016 3:08:51 PM
Analysis Method: C:\Chem32\1\Data\161226\DEF_LC 2016-12-26 15-08-50\10-90-10MIN.M (Sequence
Method)
Last changed   : 12/26/2016 4:30:27 PM
                (modified after loading)
Sample Info    : blank-2
=====

```



### Area Percent Report

```

Sorted By      : Signal
Multiplier     : 1.0000
Dilution       : 1.0000
Use Multiplier & Dilution Factor with ISTDs

```

Signal 1: DAD1 D, Sig=210,4 Ref=off

Peak #	RetTime [min]	Type	Width [min]	Area [mAU*s]	Height [mAU]	Area %
1	7.605	BV	0.0631	1.29103	3.19701e-1	12.3878
2	7.848	VV	0.1143	5.02742	6.09277e-1	48.2396
3	7.983	VBA	0.0946	3.75047	5.71123e-1	35.9869
4	9.210	BB	0.0656	3.52854e-1	8.64150e-2	3.3857



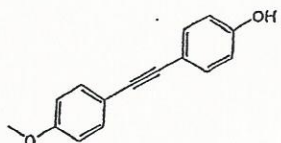
# INDOFINE Chemical Company, Inc.

121 Stryker Lane, Bldg. 30, Suite 1 • Hillsborough, NJ 08844 • U.S.A.

Phone: (908) 359-6778 • FAX: (908) 359-1179

website: [www.indofinechemical.com](http://www.indofinechemical.com)

e-mail: [chemical@indofinechemical.com](mailto:chemical@indofinechemical.com)



Catalog No.: 06-1389  
Product Name: 4-Hydroxy-4'-methoxytolan  
Lot No.: 1612747

Data File C:\CHEM32\1\DATA\161226\DEF\_LC 2016-12-26 15-08-50\blank-2.D  
Sample Name: blank

Totals : 10.42177 1.58652

-----  
\*\*\* End of Report \*\*\*



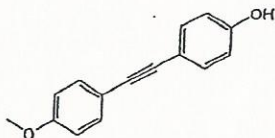
# INDOFINE Chemical Company, Inc.

121 Stryker Lane, Bldg. 30, Suite 1 • Hillsborough, NJ 08844 • U.S.A.

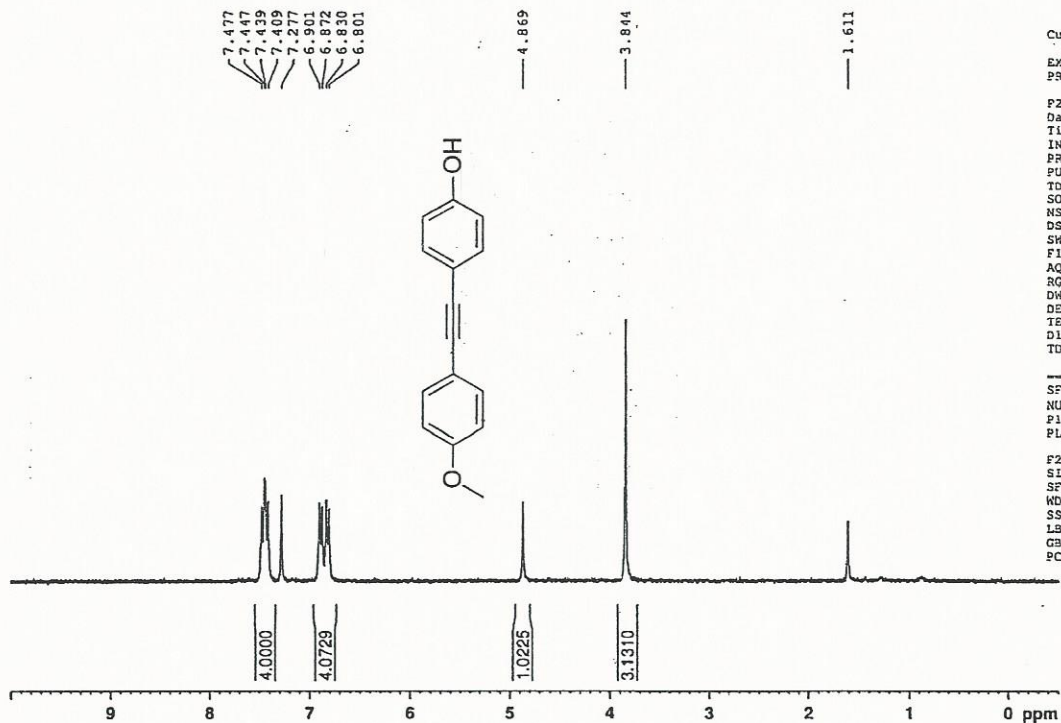
Phone: (908) 359-6778 • FAX: (908) 359-1179

website: [www.indofinechemical.com](http://www.indofinechemical.com)

e-mail: [chemical@indofinechemical.com](mailto:chemical@indofinechemical.com)



Catalog No.: 06-1389  
 Product Name: 4-Hydroxy-4'-methoxytolan  
 Lot No.: 1612747



### Current Data Parameters

EXPNO 2  
 PROCNO 1

F2 - Acquisition Parameters  
 Date\_ 20161226  
 Time 16.47  
 INSTRUM FOURIER300  
 PROBHD 5 mm DUL 13C-1  
 PULPROG zg30  
 TO 65536  
 SOLVENT CDCl3  
 NS 7  
 DS 2  
 SWH 6103.516 Hz  
 FIDRES 0.093132 Hz  
 AQ 5.3687091 sec  
 RG 247.461  
 DW 81.920 usec  
 DE 6.50 usec  
 TE 296.2 K  
 D1 1.00000000 sec  
 TDO 1

----- CHANNEL f1 -----  
 SF01 300.1818537 MHz  
 NUC1 1H  
 P1 12.40 usec  
 PLW1 10.00000000 W

F2 - Processing parameters  
 SI 65536  
 SF 300.1800000 MHz  
 WDM ZH  
 SSB 0  
 LB 0.30 Hz  
 GB 0  
 PC 1.00